

THANK YOU FOR YOUR SUPPORT



# BTPA UPDATES

[www.btpa.org.au](http://www.btpa.org.au)

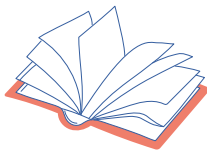


## SCHOOL UPDATE

In March 2020, schools in the Philippines closed. Since then, the staff at Bahay Tuluyan have been providing remote learning for dozens of children for more than two years with very limited resources.

The donated second-hand iPads from St Bernadette's, North Sunshine, certainly helped with remote learning. Thanks!

There are SOME schools opening, on limited basis now. We are not sure what will happen at beginning of school year, which will likely be September. We are hopeful but nothing is certain yet.



## WHAT CAN WE DO?

There are many back-to-school costs for the children in Bahay Tuluyan's care and community.

By making a tax deductible donation to BTPA, we will be able to support more children in their return to school.

[www.btpa.org.au/donate](http://www.btpa.org.au/donate)



## WHAT WAS THE IMPACT?

Students in the Philippines have had very limited access to quality remote learning.

One research paper identified more than 85% of children in the Philippines experience learning poverty.

Learning poverty is determined by the number of 10 year old children unable to read or understand a simple story.

This percentage has grown significantly during the pandemic, up from 69.5% in 2019.

Read the full article "When 10-year-olds can't read: The dulling of PH education" from Inquirer.net: [shorturl.at/bkuBR](http://shorturl.at/bkuBR)



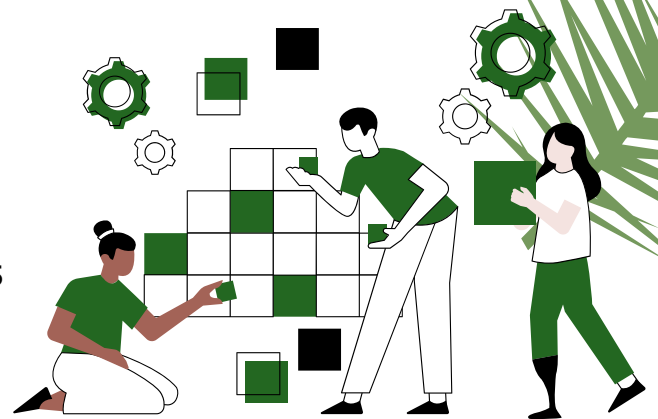
# PARTNERS CREATING CHANGE

BTPA (Bahay Tuluyan Philippines Australia) was founded with two clear objectives. Firstly, to support the critical work of Bahay Tuluyan. Secondly, to build awareness of social justice.

This bond was created when Catherine Scerri became an Australian volunteer at Bahay Tuluyan. She rallied her community to support the efforts in the Philippines. Almost 20 years later, Catherine is now the Executive Director at Bahay Tuluyan and BTPA is critical in providing funding for all aspects of their operation.

This partnership has been characterised by respect and support. BTPA has remained responsive to the changing needs of the organisation and has been reliable in providing regular financial installments to keep Bahay Tuluyan operating.

At BTPA's recent Strategic Planning Day, the committee affirmed the strong connection between BTPA and Bahay Tuluyan. As our 2022-25 Strategic Plan takes shape, the core element is our commitment to making a difference in the lives of vulnerable children through partnership with Bahay Tuluyan.



## SHOP NOW OPEN

There are a number of items available for purchase through the BTPA Shop, [www.btpa.org.au/shop](http://www.btpa.org.au/shop)

This includes pencil cases, bags and jewellery. We have recently managed to replenish our very popular large FunChum bag supply. Be quick - these are popular!

Teachers - we also have large printed mats for your classroom with mathematical concepts - eg. number lines, 100s charts, etc. The students stand on the mats - much clearer than masking tape on the floor! They are a terrific way to engage kinesthetic learners.